

PRICE LIST 2024 REPUBLIC OF IRELAND



floorheating



JK® system | in-ground warm water underfloor heating system (using JK® flextube, diameter: 14 mm)

Pipe spacing approx. 125 mm		Screed Installation - All prices include 13.5% VAT			
Loops/circuits	Maximum area	SOLID*		DRY**	
		SOLID	SOLID inc. Flexseal	DRY	DRY inc. Flexseal
1	11 m ² (sq.m)	€1,490.00	€1,600.00	€1,043.00	€1,153.00
2	22 m ² (sq.m)	€1,990.00	€2,210.00	€1,393.00	€1,613.00
3	33 m ² (sq.m)	€2,560.00	€2,890.00	€1,792.00	€2,122.00
4	44 m ² (sq.m)	€3,130.00	€3,570.00	€2,191.00	€2,631.00
5	55 m ² (sq.m)	€3,700.00	€4,250.00	€2,590.00	€3,140.00
6	66 m ² (sq.m)	€4,270.00	€4,930.00	€2,989.00	€3,649.00
7	77 m ² (sq.m)	€4,840.00	€5,610.00	€3,388.00	€4,158.00
8	88 m ² (sq.m)	€5,410.00	€6,290.00	€3,787.00	€4,667.00
9	99 m ² (sq.m)	€5,980.00	€6,970.00	€4,186.00	€5,176.00
10	110 m ² (sq.m)	€6,550.00	€7,650.00	€4,585.00	€5,685.00
Per extra loop/circuit		€ 412.50	€ 468.19		

The Recommended Retail Price (RRP) includes installation of a JK® underfloor heating (UFH) system in accordance with the JK® installation conditions and the JK® Manifold. *fix rate for solid surfaces screed, concrete, tiles **fixed rate for dryboard surfaces as FERMACELL, i.e. first floor

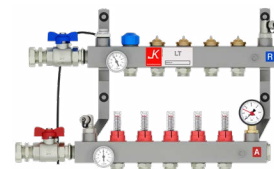
JK® Ecoline Manifold (1-12 Port)

Complete with direct mounted A-rated Wilo Yonos pump and built in blending set. The JK® Ecoline manifold is designed to connect to a high temperature heat-source that requires blending prior to entering the JK® system and therefore not suitable for use with a low temperature systems.



JK® LT Manifold (1-12 Port)

The JK® LT manifold is designed to connect to a low temperature heat-source (such as GSHP or ASHP). This design does not contain a blending set or circulation pump and therefore not suitable for use with a high-temperature systems.



Additional / Optional: Products & Services

Price on accessories may vary, subject to quotation

Fees / Deductions		Price exc. VAT	Price inc. VAT (13.5%)
Phased installation (<8 loops)	charge per phase	€ 275.00	€ 312.13
By-pass valve	22 (mm) - supply only	€ 21.52	€ 24.42
Actuator Head 230V	per piece	€ 19.10	€ 21.67
Approx. 30cm channel prep. for floor sensors (floor probe)	per channel	€ 38.50	€ 43.70
TECE Press joint - supply / fit / guarantee	per piece	€ 49.50	€ 56.19
Service call-out (repair etc.)	planned	€ 165.00	€ 187.28
Service call-out (repair etc.)	urgent	€ 275.00	€ 312.13
Flow/Return prep. for i.e. towel rad., services, other UFH system	per flow/return prep.	€ 82.50	€ 93.64
Generator (subject to availability)	per day	€ 396.00	€ 449.46
CAD tube layout design from DWG file for quoted JK® system floor-heated area (From customer supplied DWG file) - project ranging from 30-150 m ²		€ 132.00 +€1.54 per m ²	€ 149.82 +€1.75 per m ²
Heat loss analysis and CAD tube layout design for quoted JK® system floor-heated area (From customer supplied DWG file and insulation values) - project ranging from 30-150m		€ 132.00 +€2.20 per m ²	€ 149.82 +€2.50 per m ²

* JK® flexsealing is not a levelling compound! Product is solely intended to backfill UFH channels prior to liquid compound application. The substrate must be flat and smooth prior to application of JK flexsealing ** Wedges are used to secure JK® flextube into the channels, advisable prior to JK flexsealing or levelling/smoothing compound applications. Quantity recommendation; one wedge insert per 500 [mm] pipe-length.

PRICE LIST 2024 REPUBLIC OF IRELAND



floorheating



The RRP is primarily based on the number of square metres, however, there are some exceptions. Please read the explanation below and use the example to ensure that the correct price will be calculated. The two situations are explained below and an example is provided for situation 2.

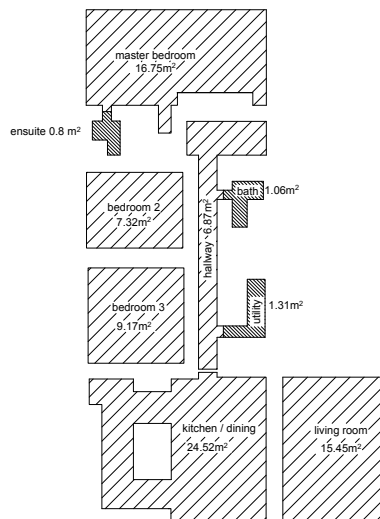
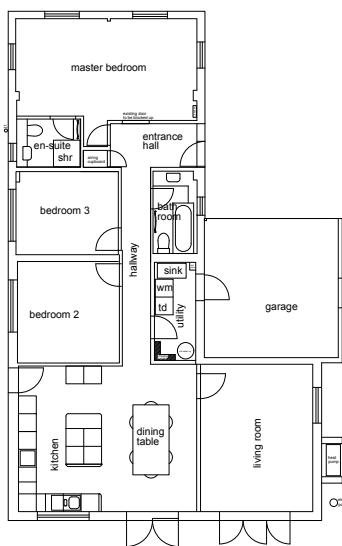
Situation 1

If the space to be heated is regarded as one room / zone the total area can be measured and the corresponding area given in the price list can be used for calculating the price. For instance, 50m² requires a 5-loop system (max 55m²), which is supplied from one manifold unit (either Ecoline or LT).

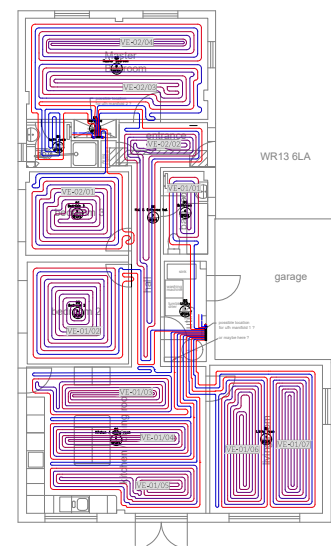
Situation 2

If the space to be heated is regarded as separate zones, the total area of each zone must be measured individually and the number of loops needs to be selected on an individual zone basis.

*Flow/Return distance to and from the manifold for loops must be accounted and measured for each zone. Wall to wall measurement results in 'gross' area, reducing the distance by 40 cm results in 'net' area which is accurate for the JK® system.



Redrawing is charged at £4.50/m²



Example; Installation of UFH in seven separate zones

Zone 1:	Kitchen/Dining	24.5 m ²	3 loops
Zone 2:	Living Room	15.5 m ²	2 loops*** concrete
Zone 3:	Bedroom 3	9.2 m ²	1 loop
Zone 4:	Hallway/Utility	8.2 m ²	1 loop*** concrete
Zone 5:	Bathroom	2.0 m ²	1 loop
	Manifold 1	59.4 m²	8 port
Zone 6:	Master Bed	16.8 m ²	2 loops
Zone 7:	Bedroom 2	7.3 m ²	1 loop
	Manifold 2	24.1 m²	3 port
Total:		83.5 m²	11 loops (instead of 8)

*** Concrete cutting fees apply

sales@jk-ie.com

This price list is valid from 1st June 2024 - JK® floorheating Limited. has the right to change the RRP without notice - Terms and Conditions apply.